

VS SERIES 700-900 MM

L'offre de robots articulés à six axes VS-Series sont idéaux pour les applications où l'espace opérationnel est limité. Les caractéristiques des modèles 700 et 900 mm incluent :

- Temps de cycle exceptionnellement rapides de 0,36 à 0,33 sec.
- Répétabilité exceptionnelle de $\pm 0,03$ à $\pm 0,02$ mm
- Charges utiles jusqu'à 7 kg
- Atteint de 700 à 900 mm
- Moment d'inertie maximal admissible élevé
- La conception compacte, avec des bras ultrafins, permet d'économiser de l'espace et facilite l'intégration
- Montage au sol, au mur ou au plafond, sans matériel spécial nécessaire
- La protection IP67 en option résiste aux copeaux de coupe et au lavage haute pression
- Le câblage interne en option permet un montage facile des appareils Gigabit Ethernet et des servo-pinces sur la bride
- La connexion par câble en bas en option permet d'économiser de l'espace au sol



VS068G



VS087G

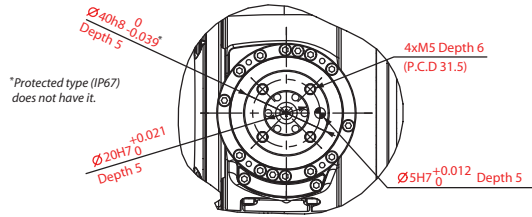


	VS-068	VS-087
Number of axes	6	
Overall arm length (mm)	340 (first arm) + 340 (second arm) = 680	445 (first arm) + 430 (second arm) = 875
Arm offset (mm)	J1 (swing): 30 J3 (front arm): 20 J6 (flange): 80	
Reach (to center of 5th axis, mm)	710	905
Minimum motion area (mm)	203	235
Maximum payload (kg)	7	
Weight, approx. (kg)	49	51
Cycle time (sec.)	0.33 (with 1-kg weight)	0.36 (with 1-kg weight)
Range of motion (°)	J1: ± 170 J2: +135, -100 J3: +153, -120 J4: ± 270 J5: ± 120 J6: ± 360	J1: ± 170 J2: +135, -100 J3: +153, -136 J4: ± 270 J5: ± 120 J6: ± 360
Maximum payload (kg)	7	
Maximum composite speed (mm/sec.)	11,000	
Maximum joint speed (°/sec.)	J1: 450 J2: 360 J3: 510 J4, J5: 540 J6: 864	J1: 360 J2: 300 J3: 408 J4, J5: 540 J6: 864
Repeatability ¹ (mm)	± 0.02	± 0.03
Max. allowable moment of inertia (kgm ²)	J4 and J5: 0.450 J6: 0.100	
Max. allowable moment (Nm)	J4 and J5: 16.2 J6: 6.86	
Position detection	Absolute encoder	
Drive motors and brakes	AC servomotors and brakes for all axes	
Air piping (in-arm integrated) option	7 systems ($\varnothing 4 \times 6$, $\varnothing 6 \times 1$); 3 solenoid valves (2-position, double solenoid); 3 solenoid valves (3-position, center open); 3 solenoid valves (3-position, center close)	
Wiring (in-arm integrated)	10 lines (max. 1 A per line) ² LAN (1000BASE-TX) \times 1 (option) ³ 17-line electrical wire for cameras, etc. ³ Option set with LAN ³	
Air source (operating pressure, MPa)	0.10–0.39	
Air source (maximum allowable pressure, MPa)	0.49	
Protection class	Standard: IP40; option: IP67 (dust- and splashproof)	
Ceiling- and wall-mount	✓	

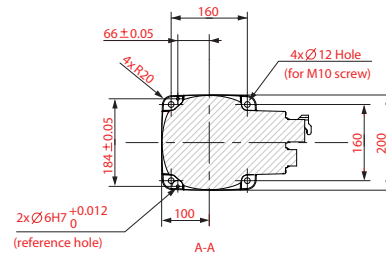
1. In every direction. 2. Four lines with LAN option. 3. Option only for IP40 model

VS SERIES 700-900 MM

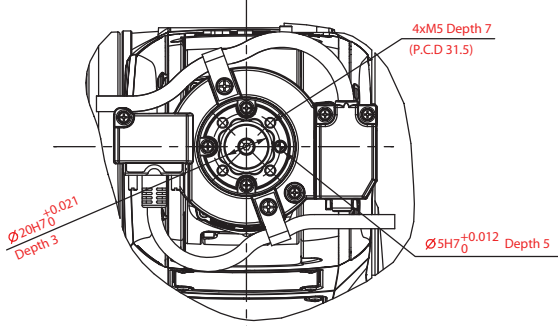
Detailed drawing of end-effector mounting face (Standard Flange)



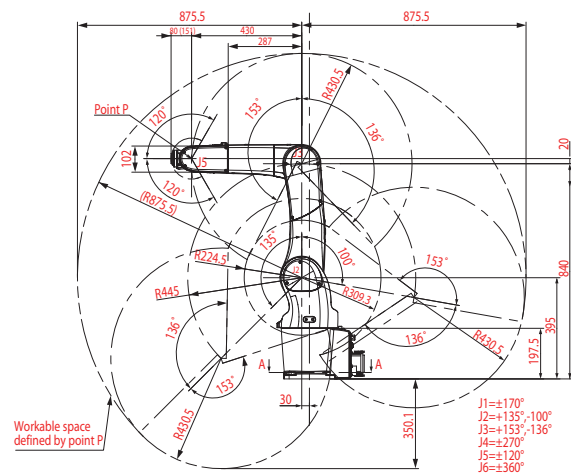
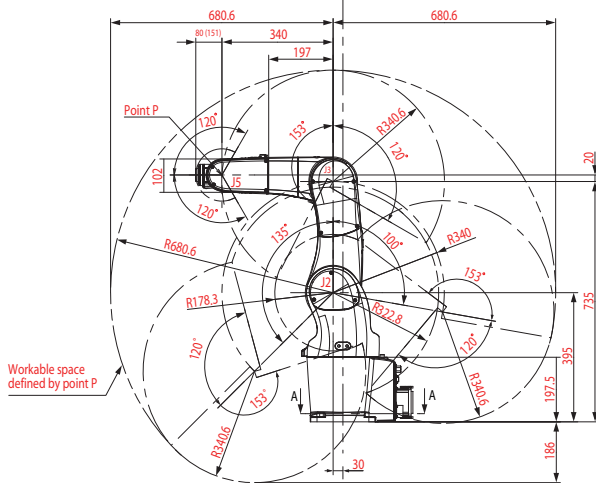
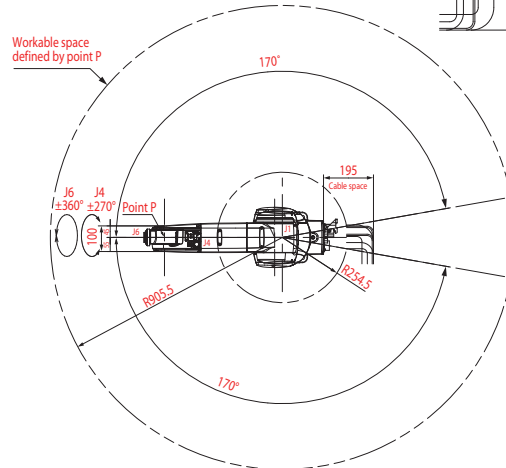
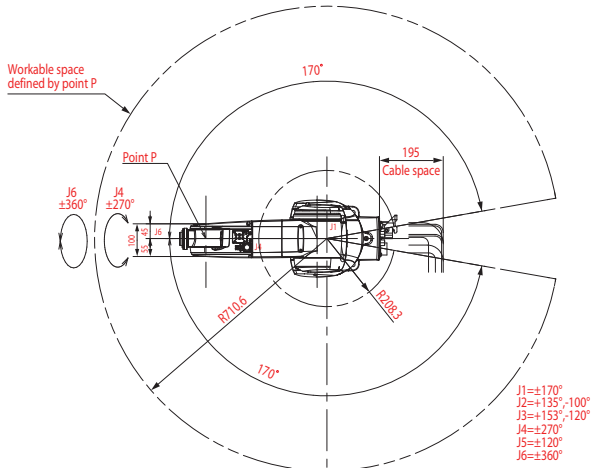
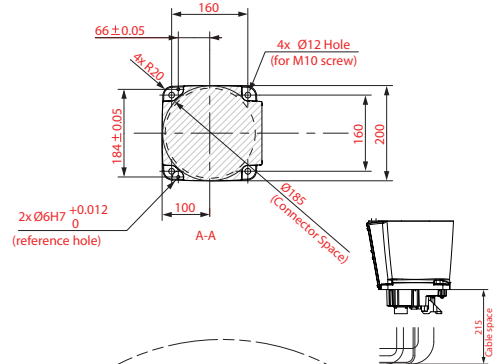
Detailed drawing of base mounting face (Rear Connector Panel)



Detailed drawing of end-effector mounting face (Communication Interface Flange-A)



Detailed drawing of base mounting face (Bottom Connector Panel)



() is Communication interface Flange-A